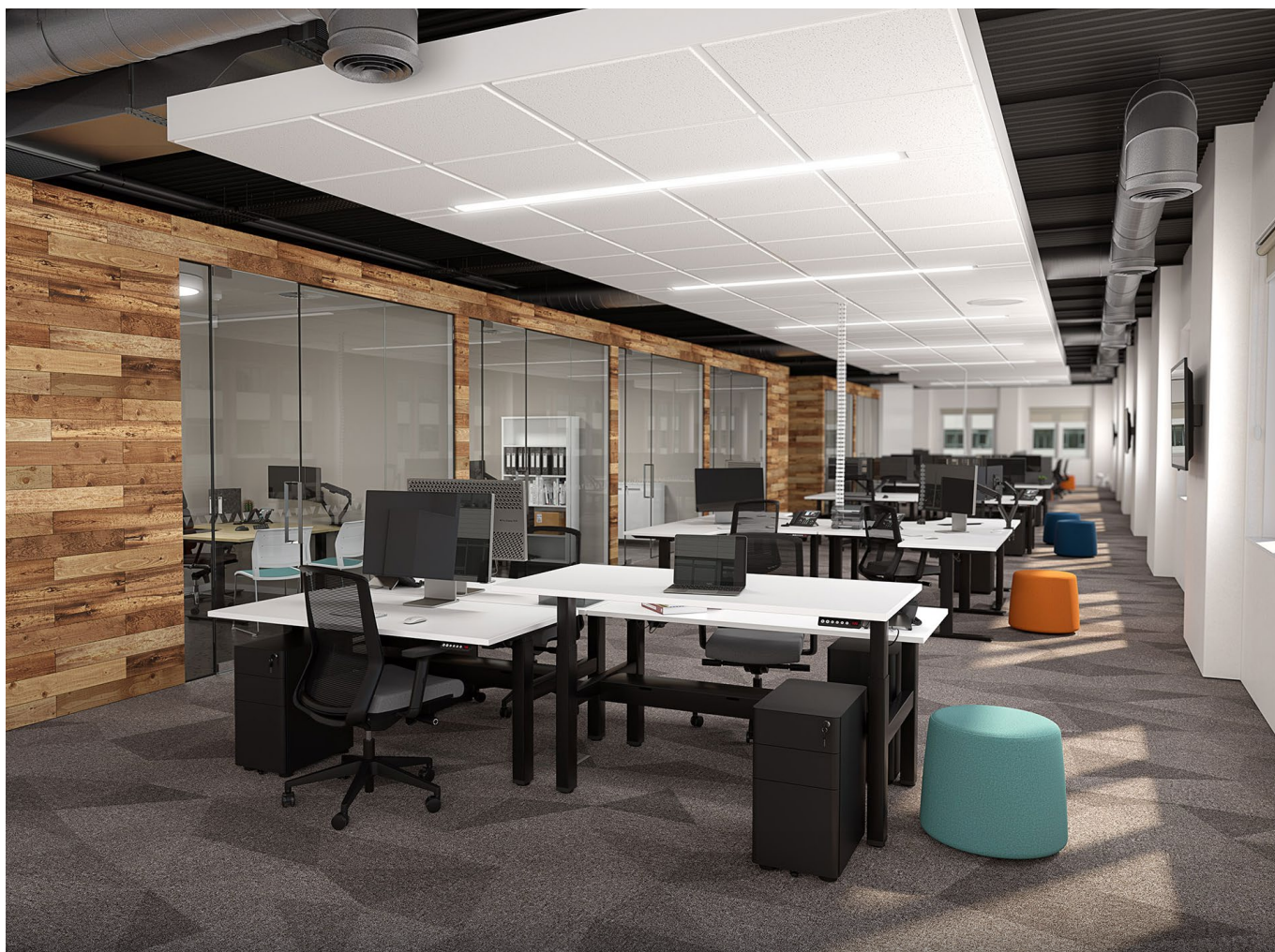


# Agile Desks

New Zealand's most versatile workstation system - that's why we call it 'Agile'. Agile's understated simplicity allows users to alternate between seated and standing work positions.



## FEATURES

- Commercial-grade 25mm construction finished in melamine with 2mm PVC edge.
- Frames are available in two configurations single and shared with your choice of powdercoat finish.
- Compatible with Studio50 screens (with or without cable management).
- Optional cable trays are available.
- Winder: Handle folds away when not in use.
- Electric: Smooth silent path - so no co-worker disturbance or irritation.
- Electric 2 column: Single motor and digital height readout with 4 point memory.
- Electric 3 column: Twin motor, anti-collision protection, easy install with folded leg system and digital height readout with soft-touch 2 point memory handset.
- Add additional functionality to your electric desk by upgrading to a bluetooth adaptor (control your desk via iOS or Android device). **Estimated arrival early 2023.**

15  
YEAR  
WARRANTY

↑↓  
HEIGHT  
ADJUSTABLE

E1  
BOARD  
CERTIFIED

ISO  
14001  
EMS



### Frame



White P/C

Silver P/C

Black P/C

### Melamine / PVC Edge



White

Silver

Nordic Maple

Atlantic Oak

Black

 **KNIGHT**

[knightgroup.co.nz](http://knightgroup.co.nz)

# Agile Desks



## Fixed

- 1800w x 800d
- 1500w x 800d
- 1200w x 700d
- Height 715mm\*



## Winder

- 1800w x 800d
- 1500w x 800d
- 1200w x 700d
- Adjustable height 680 - 1130mm\*
- Up and down speed 5mm/turn
- 100kg weight rating



## Electric 2 Column

- 1800w x 800d
- 1500w x 800d
- 1200w x 700d
- Adjustable height 680 - 1130mm\*
- Single motor
- Up and down speed 22mm/sec
- 120kg weight rating



## Electric 3 Column

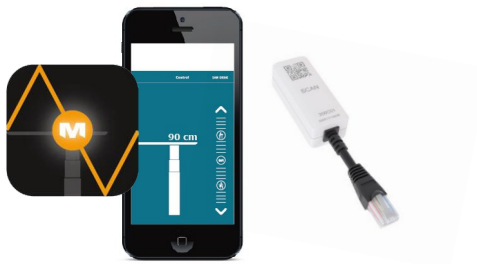
- 1800w x 800d
- 1500w x 800d
- 1200w x 700d
- Adjustable height 640 - 1290mm\*
- Twin motor
- Up and down speed 35mm/sec
- 140kg weight rating



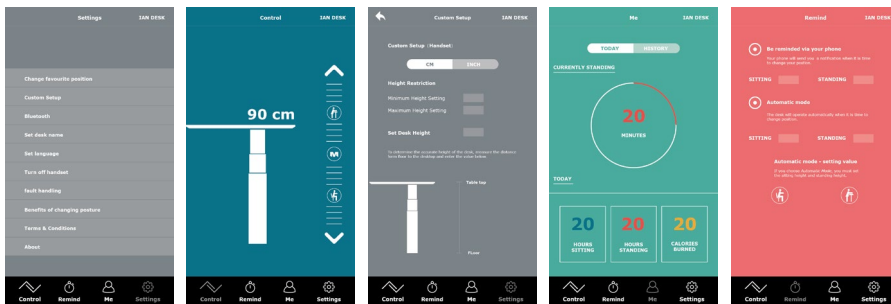
\*Height measurements include worktops.

## Bluetooth Upgrade

- Personalise & control your desk via the mobile app.
- Create good habits by setting reminders to stand.
- Track standing metrics along with calories burned.



Estimated arrival early 2023



# Agile Workstations

New Zealand's most versatile workstation system - that's why we call it 'Agile'. Agile's understated simplicity allows users to alternate between seated and standing work positions.



## FEATURES

- Commercial-grade 25mm construction finished in melamine with 2mm PVC edge.
- Frames are available in single user configuration with your choice of powdercoat finish.
- Compatible with Studio50 screens (with or without cable management).
- Optional cable trays are available for 90°, worksurface fixing trays for 120°.
- Electric: Smooth silent path - so no co-worker disturbance or irritation.
- Electric 2 column: Single motor and digital height readout with 4 point memory.
- Electric 3 column: Triple motor, anti-collision protection, easy install with folded leg system and digital height readout with soft-touch 2 point memory handset.
- 120° available with White worktop only.
- Add additional functionality to your electric desk by upgrading to a bluetooth adaptor (control your desk via iOS or Android device). **Estimated arrival early 2023.**

15  
YEAR  
WARRANTY  
★★★★

↑↓  
HEIGHT  
ADJUSTABLE

E1  
BOARD  
CERTIFIED

ISO  
14001  
EMS



### Frame

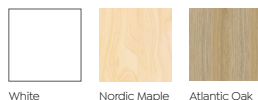


White P/C

Silver P/C

Black P/C

### Melamine / PVC Edge



White

Nordic Maple

Atlantic Oak

 **KNIGHT**

[knightgroup.co.nz](http://knightgroup.co.nz)

# Agile Workstations



## Fixed

- 1800 x 1800w x 700d
- 1500 x 1500w x 700d
- Height 715mm\*
- **Desk & return frame with workstation worktop**



## Winder

- 1800 x 1800w x 700d
- 1500 x 1500w x 700d
- Adjustable height 680 - 1130mm\*
- Up and down speed 5mm/turn
- 100kg weight rating
- **Desk & return frame with workstation worktop**



## Electric 2 Column

- 1800 x 1800w x 700d
- 1500 x 1500w x 700d
- Adjustable height 680 - 1130mm\*
- Single motor - up and down speed 22mm/sec
- 120kg weight rating
- **Desk & return frame with workstation worktop**



## Electric 3 Column **BIFMA**

- 1200 x 1200w x 700d - 120°
- 1800 x 1800w x 700d - 90°
- 1500 x 1500w x 700d - 90°
- Adjustable height 640 - 1290mm\*
- Triple motor - up and down speed 30mm/sec
- 140kg weight rating
- **Standard workstation frame**



\*Height measurements include worktops.

## Bluetooth Upgrade **NEW**

- Personalise & control your desk via the mobile app.
- Create good habits by setting reminders to stand.
- Track standing metrics along with calories burned.



Estimated arrival early 2023

